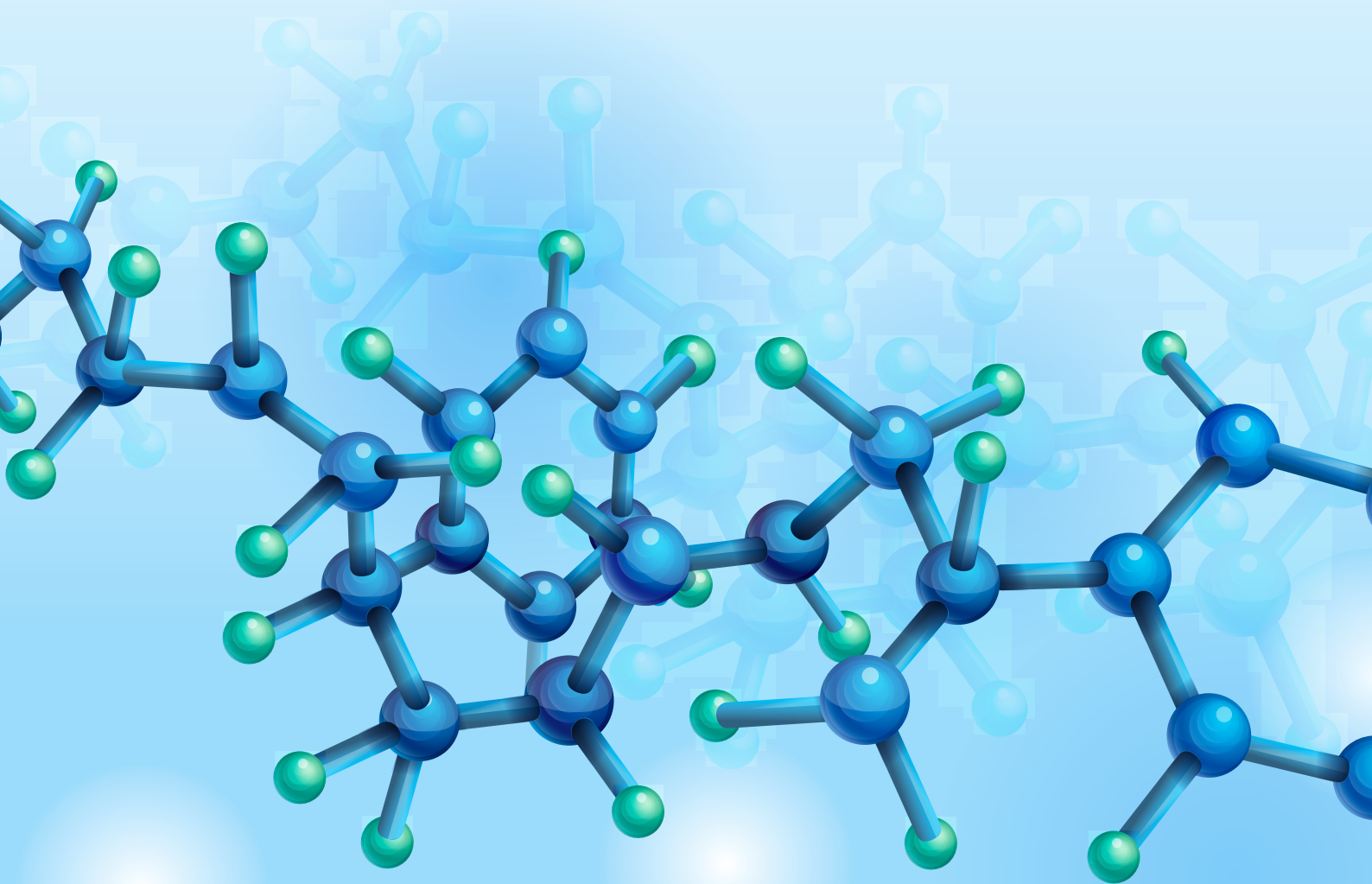


ELASTOMIX CO.,LTD.





Since our founding in 1964, we provide our products for automobiles, electric appliances, precision machineries, industrial products and etc. and services with satisfying quality and safety.

While always pursuing possibilities and opportunities, we contribute the economy and society through providing our product to countries and regions all over the world.

In order to realize decarbonized society, our business environment is going through a period of significant transformation.

We currently are in uncertain circumstances where the future is very difficult to predict, amid changing human values, deepening environmental and social problems, development of technology and geopolitical risks.

Even in these business environments and circumstances our company encounter, we create value and contribute to the creation of a sustainable future society through our rubber compounding technology and possibility.

President
Masashi Kato



Mission as the company of ENEOS group

Through our high-quality compounding technology, we create value and contribute to the creation of a sustainable future society.

Our Five Core Values

① High ethical standards

Based on our core principles of integrity and fairness, we conduct all of our business activities in accordance with our high ethical standards.

② Health, safety, and environment

We give the highest priority to health, safety and environmental initiatives, which are vital to the well-being of all living things.

③ Focus on customers

We strive to meet the expectations and evolving needs of our valued customers and of society as a whole through the stable provision of products and services while creating new value as only we can.

④ Taking on challenges

Taking changes in stride, we rise to the challenge of creating new value while seeking innovative solutions for today and tomorrow.

⑤ Moving Forward

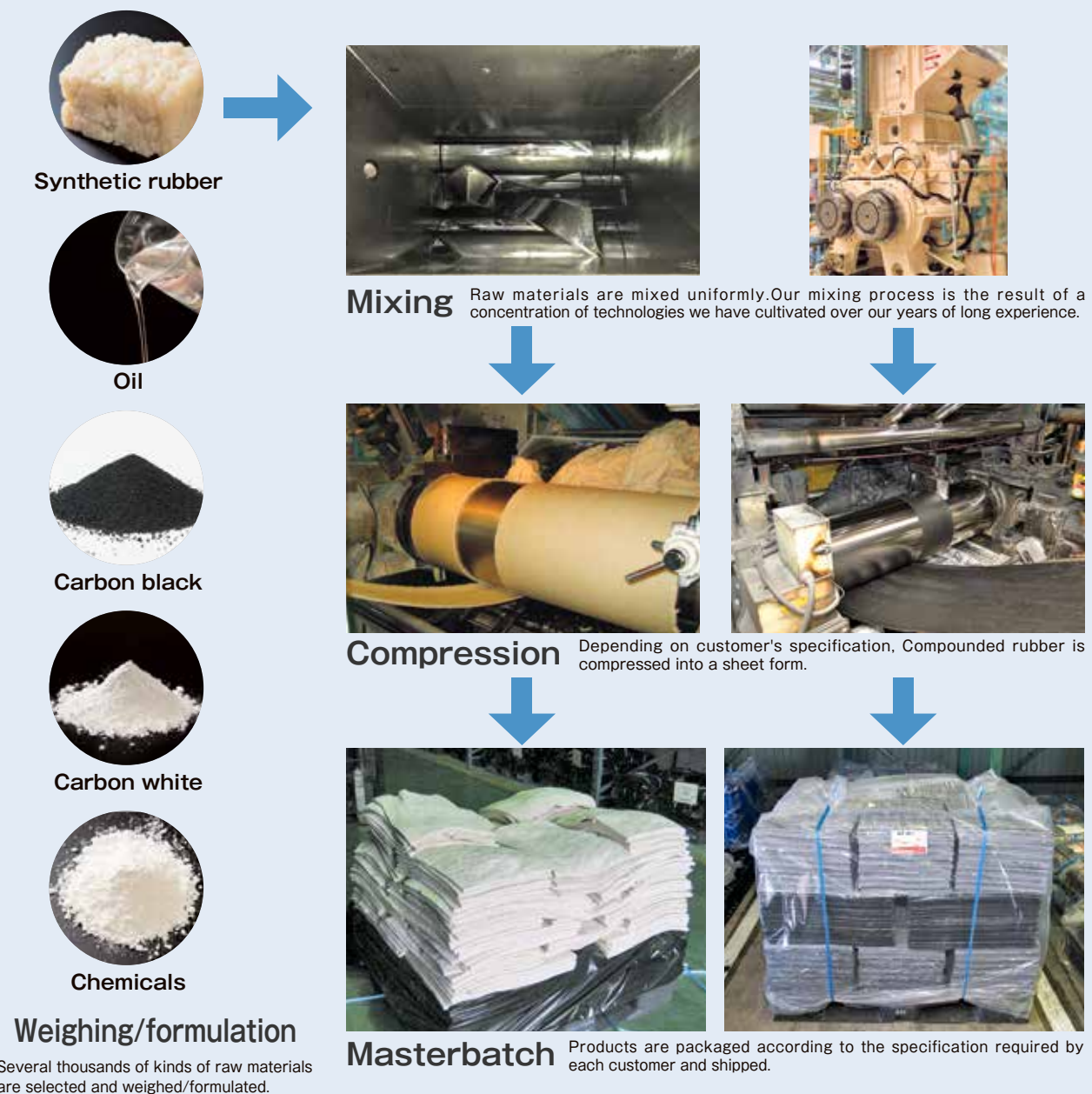
Looking to the future, we continue to grow, both as individuals and as a company, through the personal and professional development of each and every employee.

Production Processes·Quality Management

In order to make rubber products, a process for preparing rubber materials having the properties needed in a rubber product (Masterbatch) is necessary. However, this process is extremely complicated, as the properties of rubber entirely change just by a difference in the quantity of raw materials formulated or the kneading method. Although this is a very difficult field that has yet to see the establishment of an academic system worldwide, it is our mission to develop and manufacture rubber targeting more effective use of rubber products, while conducting research on Masterbatch.

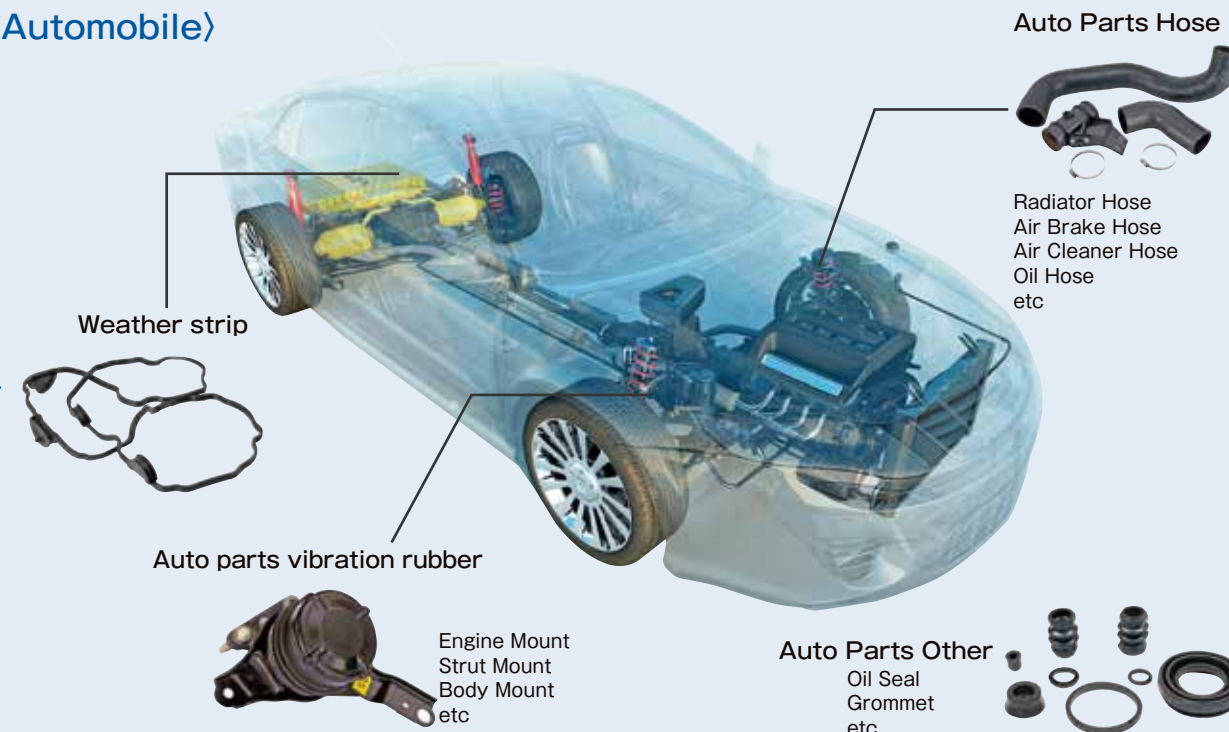
Production process

We have three plants in Japan, each of which has established a highly sophisticated production system by combining complete process control and accumulation of know-how in a well-balanced approach. Each of the plants is engaged in the production of high-quality products for meeting customer needs, while placing the highest priority on environmental conservation as well as safety and disaster prevention.

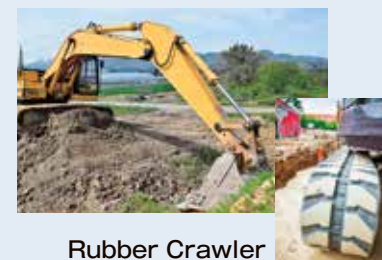


Productization Our products are found across a range of applications throughout society and in our daily life.

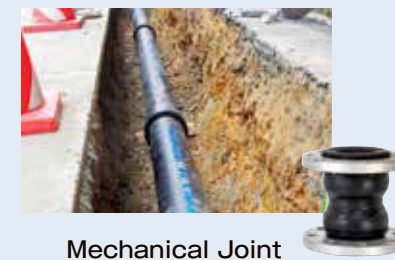
〈Automobile〉



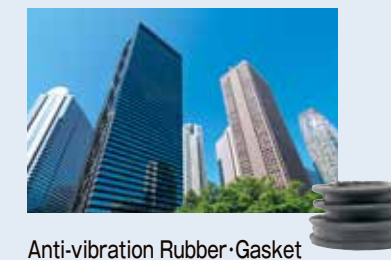
〈Construction Equipment〉



〈Civil Engineering〉



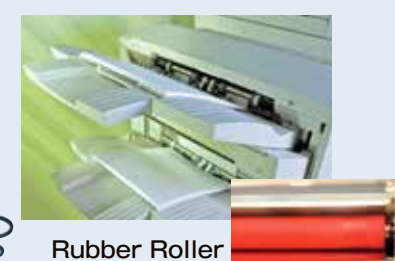
〈Architecture〉



〈Consumer Electronics〉



〈Printing〉



〈Shinkansen〉



Processing by customer

Quality management



GC
(Gas Chromatography)
It is possible to do qualitative and quantitative analysis by separating polymeric materials and constituent gases such as additives. It is effective for identifying organic compounding agents.



TG-DTA
(Thermogravimetry - Differential Thermal Analyzer)
It performs thermogravimetry and differential thermal analysis of material components at the same time. Quantitative analysis, thermal decomposition analysis, thermal stability, reactivity etc can be evaluated.



SEM
(Scanning Electron Microscope)
The surface structure of the material can be observed finely. Also, identical and quantitative analysis of contained elements is possible.

Comprehensive strength in response to needs

We offer comprehensive strength to respond to any and all kinds of needs from the rubber manufacturing industry in which highly sophisticated expertise is required.

Formulation Technology

With Masterbatch, just a change in any formulation will result in a drastic change to rubber properties. Therefore, an appropriate formulation design backed by a wealth of experience is essential, and formulation design is an extremely important factor that determines the life of product differentiation. We take pride in our highly ranked research achievements within the industry and we look to continue to respond accurately to needs that are increasingly diverse and sophisticated.

Processing Technology

Although various raw materials are needed for manufacturing Masterbatch, it is not easy to mix them uniformly. We have systematically collected and analyzed findings obtained from technical staff at worksites to promote unique research and development, resulting in the establishment of technology characteristics to the greatest extent possible.

Assessment Technology

Requests from customers are infinitely diverse and Masterbatch specifications differ depending on each customer. In order to provide a Masterbatch with a quality that satisfies all customer demands, we have prepared an exhaustive assessment system.

Raw Materials Knowledge

In order to manufacture Masterbatch, it is important to fully understand the properties and characteristics of raw materials. By leveraging our raw materials knowledge that we have accumulated for over half a century, we have started to globalize raw materials, making it possible to provide raw materials to our customers at a competitive price.

Mastering molding processes

We believe it is necessary to fully master the molding and processing processes that are conducted by customers so that we can provide customers with a Masterbatch that they can use with a high level of satisfaction. By establishing a relationship of trust with our customers, we are also demonstrating our commitment to acquire knowledge about the molding processes they use.

Production system that supports stable supply

We have a production system that covers not only domestic but also overseas areas that enables us to promptly and stably supply a wide range of products that meet customer needs. Furthermore, in order to supply high-quality products to customers, we conduct thorough quality management at all domestic and overseas bases.

Development and improvement directly connected to customer needs

Production system that allows stable supply of high-quality products

Customer-oriented proposal and follow-up system

Our ability to make proposals that meet the expectations of customers

We are ready to solve customer problems together with customers and meet their demands by unifying sales, technical and production departments. We also carry out continuous follow-ups so that customers can use our products with peace of mind by leveraging our technology and know-how as well as our far-reaching global network.

ELASTOMIX Group's Network

ELASTOMIX group provide stable supply of high quality, competitive, safe and secure products to countries and regions all over the world.

JAPAN

- **Head office**
100, Kawajiri-Cho, Yokkaichi, Mie 510-0871, Japan
TEL : 059-345-2022 FAX : 059-346-5038
ISO 9001 certified, ISO 14001 certified
- **Technical Department**
100, Kawajiri-Cho, Yokkaichi, Mie 510-0871, Japan
TEL : 059-345-5965 FAX : 059-347-0441
ISO 9001 certified, ISO 14001 certified
- **Tokyo Sales Office**
1-5-2, Higashi-Shimbashi, Minato-ku, Tokyo 105-7109, Japan
TEL : 03-6218-3790
ISO 9001 certified
- **West Japan Sales Department**
1-4-1, Nishihonmachi, Nishi-ku, Osaka 550-0005, Japan
TEL : 059-343-9009
ISO 9001 certified
- **Central Japan Sales Department**
100, Kawajiri-Cho, Yokkaichi, Mie 510-0871, Japan
TEL : 059-343-9009
ISO 9001 certified



- **Yokkaichi Plant**
100, Kawajiri-Cho, Yokkaichi, Mie 510-0871, Japan
TEL : 059-345-2027
FAX : 059-348-1990



- **Tokyo Plant**
3420, Sugao-Machi, Joso, Ibaraki 303-0044, Japan
TEL : 0297-27-2231
FAX : 0297-27-0994



- **Shiga Plant**
1770, Sone-Cho, Nagahama, Shiga 526-0103, Japan
TEL : 0749-72-3301
FAX : 0749-72-2398

Overseas



- China
Tianjin Kuo Cheng Rubber Industry Co., Ltd.
No28, Jinhai Road, Jinghai Economic Development Area, Tianjin, China



- China
Fuzhou Kuo Tai CMB Co., Ltd.
QingKou Investment Area, Minhou Xian, Fuzhou, Fujian, China



- China
ELASTOMIX (FOSHAN) CO., LTD
No10 South Qili Road, Leping, Sanshui, Foshan, Guangdong, China



- THAILAND
ELASTOMIX(THAILAND) CO., LTD.
No.7/116, Moo 4, Tumbol-Mapyangporn, A-Pluakdaeng, Rayong 21140, Thailand



- INDONESIA
PT.ELASTOMIX INDONESIA
Kawasan Industri Mitra Karawang
Jl. Mitra Raya Selatan III Blok H-8, Desa Parungmulya, Kec. Ciampel, Kab. Karawang, Indonesia



- MEXICO
ELASTOMIX MEXICO S.A. de C.V.
Rio San Lorenzo No.619 Modulo 1, Parque Tecnoindustrial Castro del Rio, Irapuato, GTO, México

Company Profile

- **Company Name** : Elastomix Co., Ltd.
- **Established** : August 1964
- **Business** :
 - (1) Rubber mixing
 - (2) Sales of rubber compounds
 - (3) All other business activities incidental to foregoing
- **Production Capacity** :
 - Carbon mas terbatch (CMB) : 44,000 tons/year
 - Filler masterbatch (FMB) : 15,000 tons/year
- **End of Fiscal Period** : March
- **Capital** : 415 million yen
- **Representative** : Masashi Kato , President
- **Shareholder** : ENEOS Materials Corporation

History

- | | | | |
|----------------|---|---------------|---|
| 1964 August | HOKKAIDO GOMU KAKO CO., LTD. was established and began operation in February 1965. | 2001 March | ISO14001 certificated. |
| 1966 March | HOKKAIDO GOMU KAKO altered corporate name to NICHIGO GOMU KAKO CO., LTD.
Relocated head office from Hokkaido to Tokyo.
Yokkaichi Plant in Mie prefecture began operation. | September | Jointly aquired FUZHOU KUO TAI RUBBER INDUSTRY CO., LTD. in China. |
| October | Tokyo Plant in Ibaraki prefecture began operation. | 2002 February | ISO9001 certificated. |
| 1967 October | New Yokkaichi Plant began operation. | August | Relocated head office from Tokyo to Yokkaichi, Mie.
Tokyo Office was opened. |
| 1971 April | Shiga Plant in Shiga prefecture began operation. | 2004 October | Aquired additional shares of FUZHOU KUO TAI RUBBER INDUSTRY. |
| 1987 September | Building of Technical Department was opened inside Yokkaichi Plant. | 2005 March | ELASTOMIX (FOSHAN) CO., LTD. in China was established. |
| 1992 April | NICHIGO GOMU KAKO altered corporate name to ELASTOMIX CO., LTD. | 2007 December | Aquired additional shares of TIANJIN KUO CHENG RUBBER INDUSTRY. |
| 1996 July | Jointly aquired TINAJIN KUO CHENG RUBBER INDUSTRY CO., LTD. in China. | 2011 July | Aquired additional shares of ELASTOMIX (THAILAND). |
| 1997 February | ISO9002 certificated. | 2013 June | PT. ELASTOMIX INDONESIA was established. |
| 2000 March | ELASTOMIX (THAILAND) CO., LTD. was established. | 2017 February | ELASTOMIX MEXICO, S.A. DE C.V. was established. |
| | | 2022 April | Came under the ENEOS Group. |

Details of Plants —

Yokkaichi Plant

- Plant Area : 11,769m²
- Production Capacity : 24,000 tons/year
- Major Facilities : Mixer Line(2 Lines)
Kneader Line(1 Line)
- Major Products : Standard and customized carbon masterbatch (CMB)
- ISO 9001 certified, ISO 14001 certified

Tokyo Plant

- Plant Area : 19,197m²
- Production Capacity : 20,000 tons/year
- Major Facilities : Mixer Line(2 Lines)
Kneader Line(1 Line)
Mill blender Line(1 Line)
- Major Products : Standard and customized carbon masterbatch (CMB)
- ISO 9001 certified, ISO 14001 certified

Shiga Plant

- Plant Area : 18,017m²
- Production Capacity : 15,000 tons/year
- Major Facilities : Mixer Line(2 Lines)
Kneader Line(3 Lines)
- Major Products : Standard and customized white filler masterbatch(FMB)
Resin blended master pellets
- ISO 9001 certified, ISO 14001 certified

ELASTOMIX (THAILAND) CO., LTD. —

- Plant Area : 24,000m²
- Production Capacity : 39,000 tons/year
- Major Facilities : Mixer Line(3 Lines)
Kneader Line(4 Lines)
Mill blender Line(1 Line)
Strainer Line(1 Line)
- Major Products : Customized carbon masterbatch (CMB)
- ISO 9001 certified, ISO 14001 certified

PT.ELASTOMIX INDONESIA —

- Plant Area : 24,000m²
- Production Capacity : 9,000 tons/year
- Major Facilities : Mixer Line(1 Line)
- Major Products : Customized carbon masterbatch (CMB)
- ISO 9001 certified, ISO 14001 certified

ELASTOMIX MEXICO S.A. de C.V. —

- Plant Area : 5,000m²
- Production Capacity : 7,000 tons/year
- Major Facilities : Kneader Line(1 Line)
- Major Products : Customized carbon masterbatch (CMB)

ELASTOMIX (FOSHAN) CO., LTD —

- Plant Area : 30,000m²
- Production Capacity : 20,000 tons/year
- Major Facilities : Mixer Line(2 Lines)
Kneader Line(1 Line)
- Major Products : Customized carbon masterbatch (CMB)
- ISO14001 certified, IATF16949 certified, OHSAS18001 certified

TIANJIN KUO CHENG RUBBER INDUSTRY CO., LTD.-

- Plant Area : 33,000m²
- Production Capacity : 20,000 tons/year
- Major Facilities : Mixer Line(4 Lines)
Kneader Line(3 Lines)
- Major Products : Customized carbon masterbatch (CMB)
- ISO9001/14001 certified, IATF16949 certified, OHSAS18001 certified

